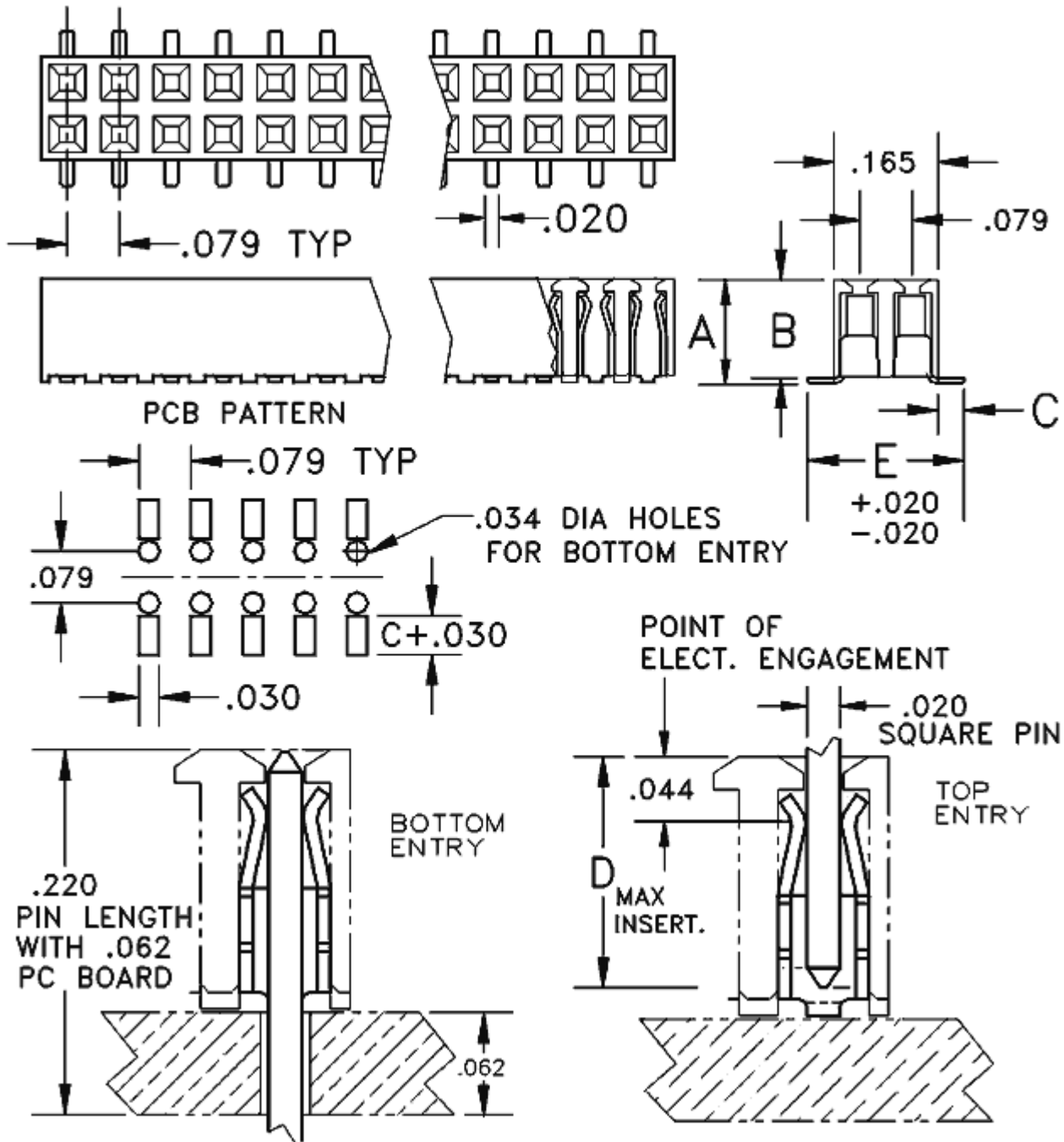


2mm	Socket	Double Row - Top or Bottom Entry	Straight	Surface Mount
-----	--------	----------------------------------	----------	---------------

2mm Center - Bottom Entry - Double Row Straight SMD Socket



Base Part Number	A		B		C		D		E		Plating Options	Number of Positions
	mm	Inch	mm	Inch	mm	Inch	mm	Inch	mm	Inch		
1352	4.11	0.162	3.99	0.157	1.02	0.040	3.43	0.135	6.22	0.245	G2 : T	4-100
1353	4.11	0.162	3.99	0.157	2.54	0.100	3.43	0.135	9.27	0.365	G2 : T	4-100

Technical Notes

Contact Material:	Contact: Stamped - Phosphor Bronze
Insulation Material:	Glass Filled Nylon 46 - UL 94V-0 rated - Black (std)
Heat Deflection:	260°C @ 264 PSI per ASTM D648
Insulation Resistance:	5000 MegOhm @ 500VDC
Current Rating:	1 amp continuous @ 100 VDC/contact
Max Processing Temp:	250°C for 60 seconds
Insertion Force:	142 grams (5.0oz) (typ initial w/ .020 inch sq pin)
Extraction Force:	80 grams (2.8oz) (typ initial w/ .020 inch sq pin)
Plastic:	High Temperature Compatible

COMM CON CONNECTORS INC.

1848 Evergreen Street, Duarte, Ca 91010 · (626) 301-4200 · fax (626) 301-4212 · e-mail:
info@commcon.com