

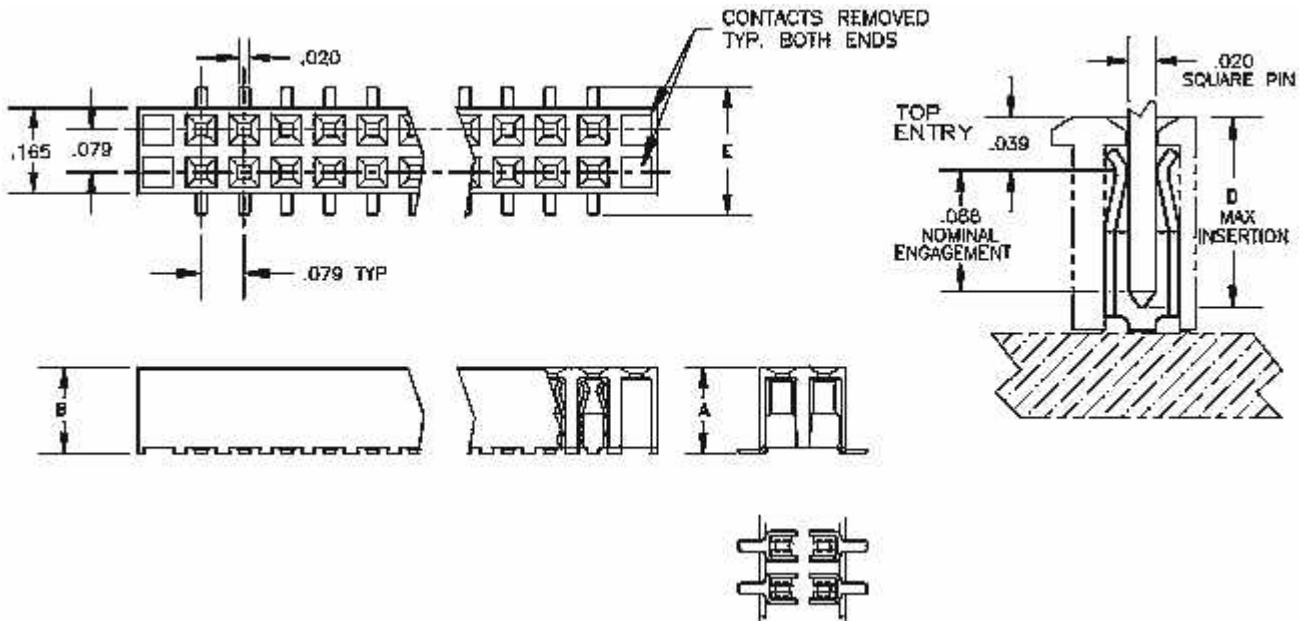
Use this browser's print function to print this entire page, then close this window.

Catalog Page 75-2

Hi Temperature Plastic

2mm	Socket	Double Row - use with Box Headers	Straight	Surface Mount
-----	--------	-----------------------------------	----------	---------------

2mm Center, Double Row Straight Surface Mount Socket - use with Box Headers



Base Part Number	A		B		C		D		E		Plating Options	Number of Positions
	mm	Inch	mm	Inch	mm	Inch	mm	Inch	mm	Inch		
1371	4.11	0.162	3.99	0.157			3.43	0.135	6.17	0.243	G2 : T	10:12:14:16:20:24:26:30:34:36:44:50:60:68

Technical Notes

- Contact Material:** Contact: Stamped, Phosphor Bronze
- Insulate Material:** Glass Filled Nylon 46, UL 94V-0 rated, Black (std)
- Temperature Range:** -65°C to +250°C
- Insulation Resistance:** 5,000 MegOhm @ 500VDC
- Current Rating:** 1 amp continuous @ 100 VDC/contact
- Max Processing Temperature:** 250°C for 60 seconds
- Insertion Force:** 142 grams (5.0oz) (typ initial w/ .020" sq pin)
- Extraction Force:** 80 grams (2.8oz) (typ initial w/ .020" sq pin)
- Heat Deflection:** 260°C @ 264 PSI per ASTM D648

COMM CON CONNECTORS INC.

1848 Evergreen Street, Duarte, Ca 91010 · (626) 301-4200 · fax (626) 301-4212 · e-mail: info@commcon.com