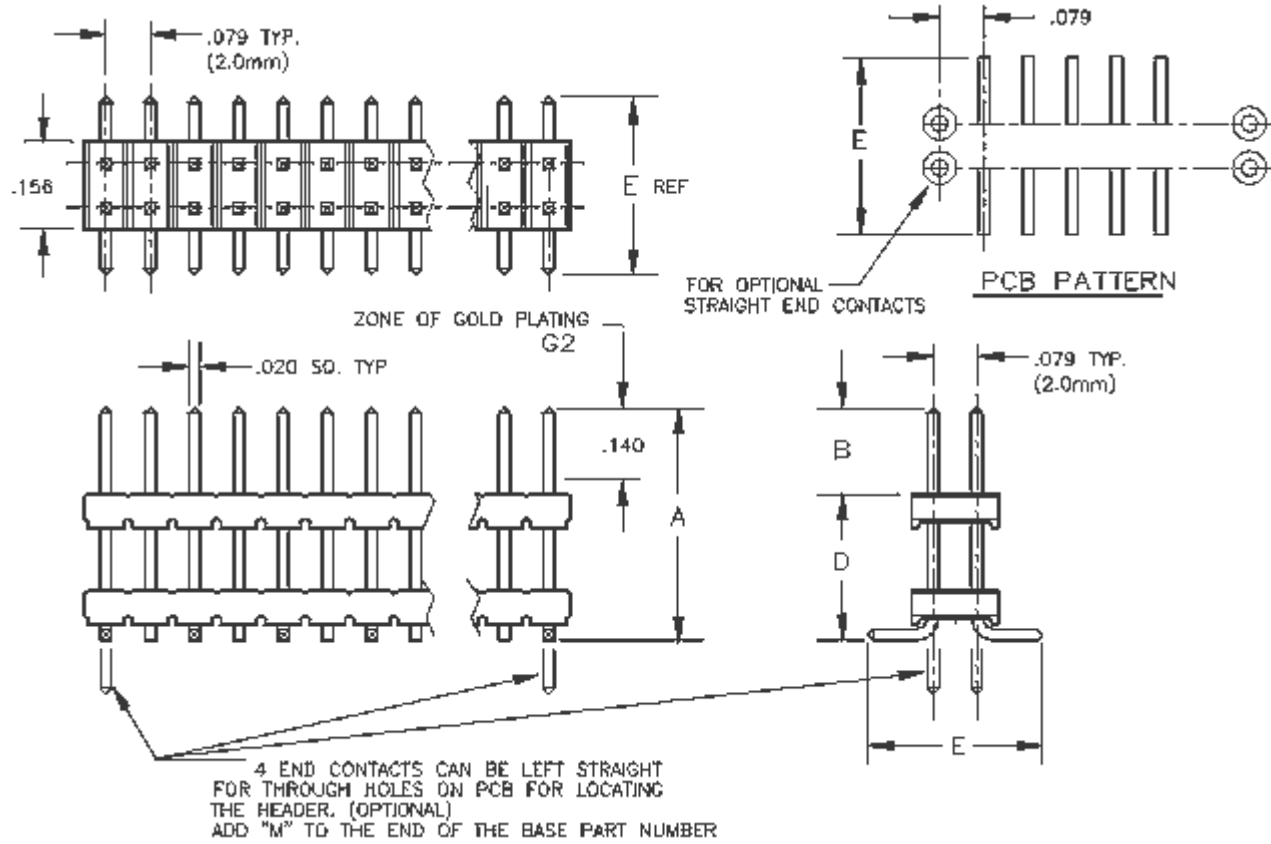


2mm	Header	Double Row - Stacking	Straight	Surface Mount
-----	--------	-----------------------	----------	---------------

2mm Center - .020 inch Square Pin - Board Stacking - Double Row Straight SMD Header



Base Part Number	A		B		C		D		E		Plating Options	Number of Positions
	mm	Inch	mm	Inch	mm	Inch	mm	Inch	mm	Inch		
2SMD2-140/175/260 2SMD2-140/175/260M add M for end pins	8.00	0.315	3.56	0.140			4.44	0.175	6.60	0.260	G2 : T	4-50
2SMD2-140/335/260 2SMD2-140/335/260M add M for end pins	12.07	0.475	3.56	0.140			8.51	0.335	6.60	0.260	G2 : T	4-50
2SMD2-140/440/260 2SMD2-140/440/260M add M for end pins	14.73	0.580	3.56	0.140			11.18	0.440	6.60	0.260	G2 : T	4-50

2SMD2-140/520/260 2SMD2-140/520/260M	16.76	0.660	3.56	0.140			13.21	0.520	6.60	0.260	G2 : T	4-50
add M for end pins												
2SMD2-140/860/260 2SMD2-140/860/260M	23.37	0.920	3.56	0.140			19.81	0.780	6.60	0.260	G2 : T	4-50
add M for end pins												

Technical Notes	
Contact Material:	Pin: Phosphor Bronze - .020 inch sq - drawn wire - burr free both ends
Insulation Material:	Glass Filled Nylon 46 - UL 94V-0 rated - Black (std)
Heat Deflection:	260°C @ 264 PSI per ASTM D648
Insulation Resistance:	5000 MegOhm @ 500VDC
Current Rating:	2 amp continuous @ 100 VDC/contact
Max Processing Temp:	250°C for 60 seconds
Plastic:	High Temperature Compatible

COMM CON CONNECTORS INC.

1848 Evergreen Street, Duarte, Ca 91010 · (626) 301-4200 · fax (626) 301-4212 · e-mail:
info@commcon.com