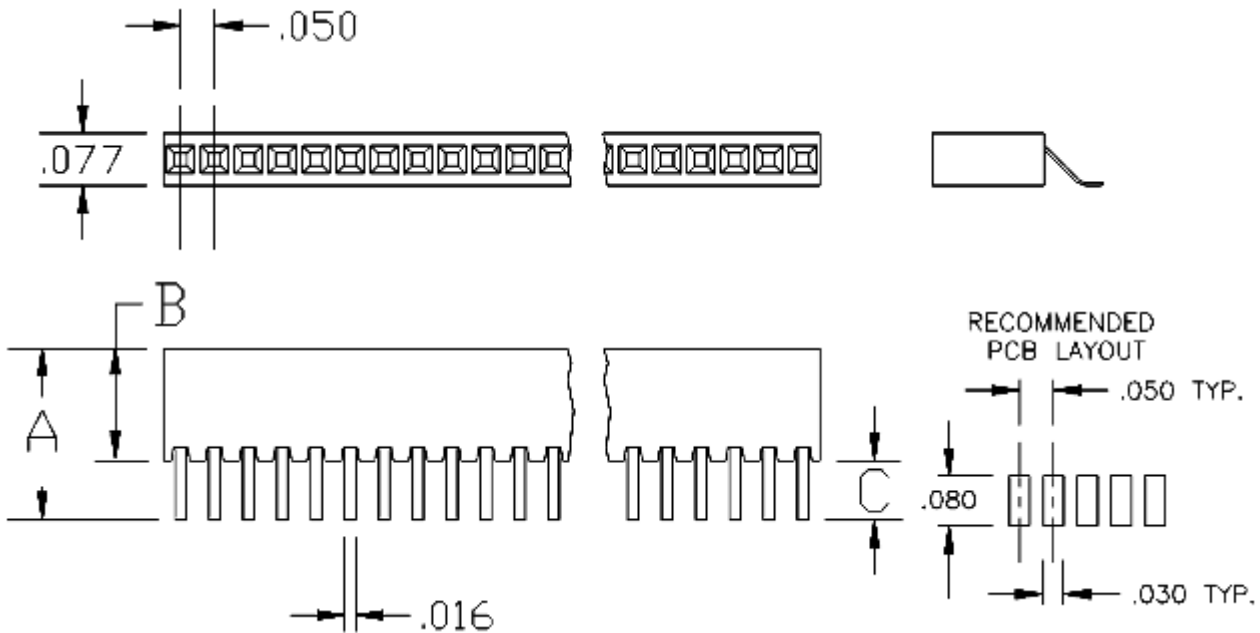


| | | | | |
|-------|--------|------------|----------|---------------|
| .050" | Socket | Single Row | Rt Angle | Surface Mount |
|-------|--------|------------|----------|---------------|

.050" Center, Single Row, Right Angle, Surface Mount Socket



| Base Part Number | A | | B | | C | | D | | E | | Plating Options | Number of Positions |
|------------------|------|-------|------|-------|------|-------|------|-------|----|------|-----------------|---------------------|
| | mm | Inch | mm | Inch | mm | Inch | mm | Inch | mm | Inch | | |
| 1485 | 6.40 | 0.252 | 4.19 | 0.165 | 2.21 | 0.087 | 3.68 | 0.145 | | | G2 | 2-25 |

| Technical Notes | |
|-------------------------------|--|
| Contact Material: | Contact: Stamped, Phosphor Bronze |
| Insulation Material: | Glass Filled Nylon 46, UL 94V-0 rated, Black (std) |
| Heat Deflection: | 260°C @ 264 PSI per ASTM D648 |
| Insulation Resistance: | 5,000 MegOhm @ 500VDC |
| Current Rating: | 1 amp continuous @ 100 VDC/contact |
| Max Processing Temp: | 250°C for 60 seconds |
| Insertion Force: | 36 grams(1.3oz) w/.016" sq pin, 65 grams(2.3oz) w/ .018"rd pin (typ initial/contact) |
| Extraction Force: | 29 grams(1.0oz) w/.016" sq pin, 57 grams(2.0oz) w/ .018"rd pin (typ initial/contact) |
| Plastic: | High Temperature Compatible |

COMM CON CONNECTORS INC.
 1848 Evergreen Street, Duarte, Ca 91010 · (626) 301-4200 · fax (626) 301-4212 · e-mail:
info@commcon.com