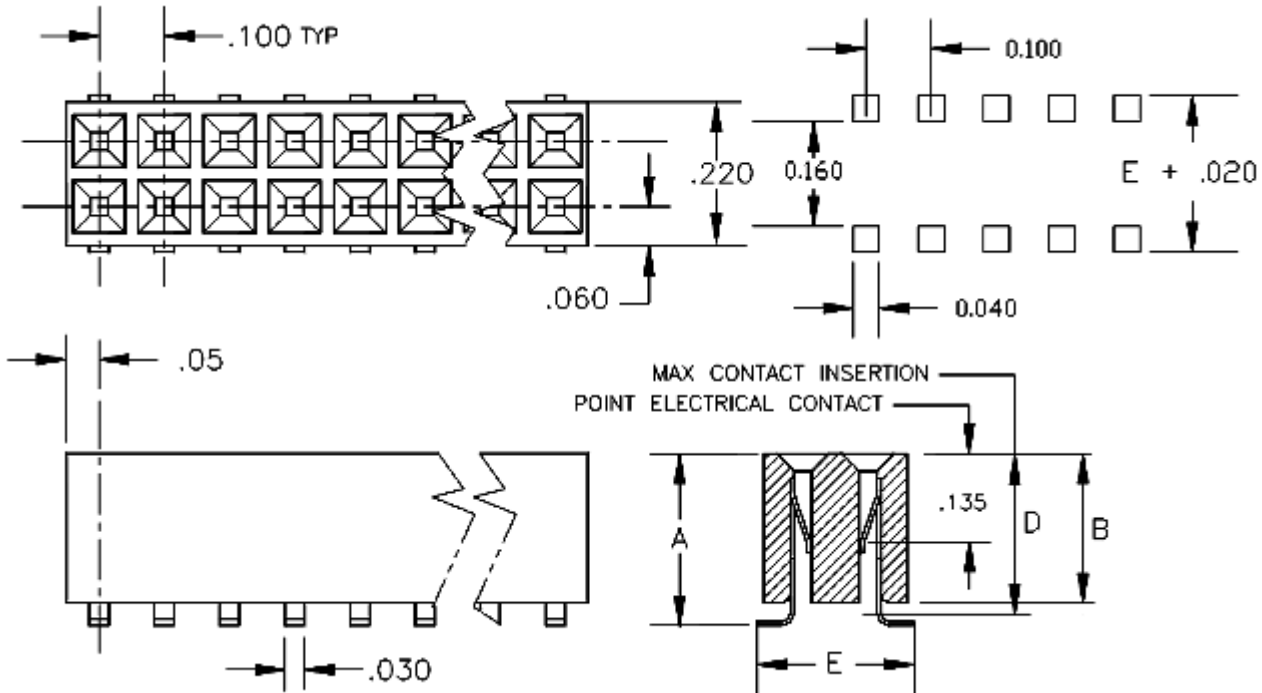


.100	Socket	Double Row - .025 Low Profile	Straight	Surface Mount
------	--------	-------------------------------	----------	---------------

.100 inch Center - Double Row Straight - Low Profile - accepting .025 inch Square Pin - SMD Socket



Base Part Number	A		B		C		D		E		Plating Options	Number of Positions
	mm	Inch	mm	Inch	mm	Inch	mm	Inch	mm	Inch		
1149	6.60	0.260	5.72	0.225			6.60	0.260	6.10	0.240	G2 : T : G230	2-80

Technical Notes	
Contact Material:	Contact: Stamped - BeCu - single beam
Insulation Material:	Thermoplastic - UL 94V-0 rated - Black
Insulation Resistance:	5000 MegOhm @ 500VDC
Current Rating:	3 amp continuous @ 100 VDC/contact
Max Processing Temp:	250°C for 60 seconds
Insertion Force:	185 grams (6.3oz) (typ initial force per contact w/ .025 inch sq pin)
Extraction Force:	102 grams (3.6 oz) (typ initial force per contact w/ .025 inch sq pin)
Plastic:	High Temperature Compatible

COMM CON CONNECTORS INC.
 1848 Evergreen Street, Duarte, Ca 91010 · (626) 301-4200 · fax (626) 301-4212 · e-mail:
info@commcon.com